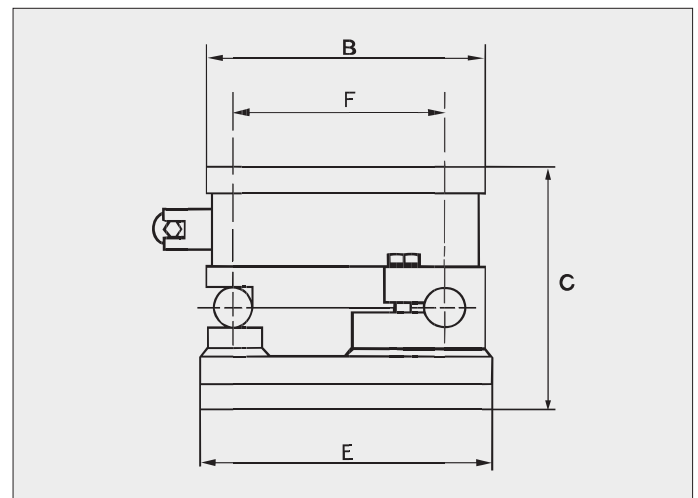
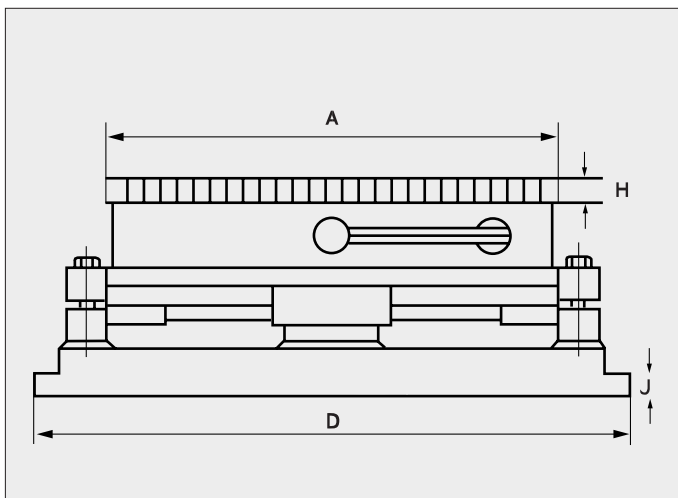


BM64.000 Series Sine Tables

for grinding operations single swivelling on the longitudinal axis

Sine tables make it possible to perform grinding operations to a high degree of accuracy on pieces of work with non-parallel surfaces. The angles can be set with end guides. The end guides can be set up to angles of 45° and the table can be rotated through 90°. The mounting for the end guides is 2 mm under the datum line which means it is possible to set very fine angles. Setting the angles can be done to an accuracy of 10 seconds (1/360°). A sine table is supplied with a chuck. To prevent movement occurring during the grinding process, the table can be locked on the shaft. The standard sine tables are supplied with a chuck with one switching zone and a normal pole spacing of 6 mm in steel and 5 mm in brass. Machining the top plate is possible to a depth of 20 mm in steel and 6 mm in brass. These types are equipped with a detachable handle with an allen key except for BM 64.005 to BM 64.009 inclusive and BM 64.105 to BM 64.109 inclusive.

These types of sine tables can also be supplied with a fine pole distribution chuck. The pole spacing is 6 mm in steel, 1.5 mm in brass, 2 mm in steel and 1.5 mm in brass. Machining the top plate is possible to a depth of 20 mm in the steel 6 mm pole distribution types, the others to a depth of 6 mm. Two end plates are supplied as standard.

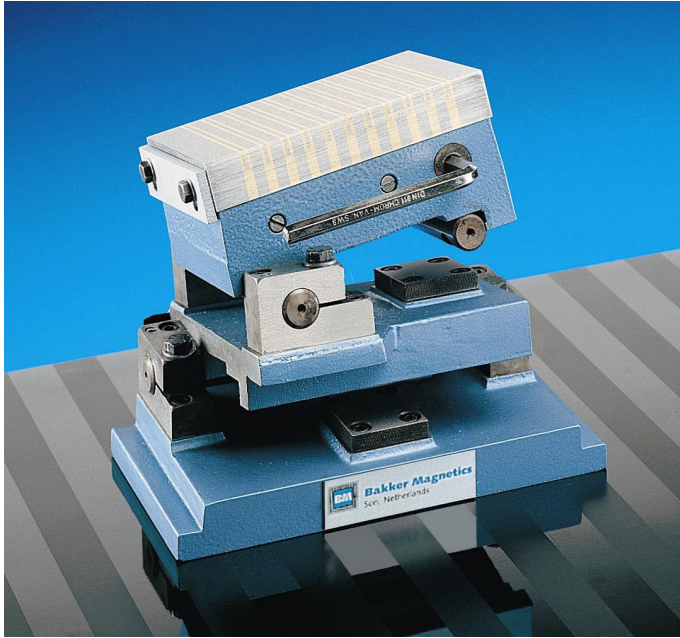


normal pole Art.no.	fine pole Art.no.	A	B	C	D	E	F	H	J	weight(kg) net gross	
BM 64.000	BM 64.100	150	100	118	238	122	70	23	15	12	14
BM 64.001	BM 64.101	255	130	125	345	152	100	23	15	25	28
BM 64.002	BM 64.102	150	150	133	240	165	100	23	15	19	22
BM 64.003	BM 64.103	250	150	133	340	165	100	23	15	30	34
BM 64.004	BM 64.104	300	150	133	395	165	100	23	15	36	40
BM 64.005	BM 64.105	350	150	139	445	165	100	23	15	40	45
BM 64.006	BM 64.106	400	150	139	492	165	100	23	15	44	50
BM 64.007	BM 64.107	450	150	139	550	165	100	23	15	50	55
BM 64.008	BM 64.108	400	200	151	520	220	150	23	15	67	76
BM 64.009	BM 64.109	500	200	151	620	220	150	23	15	87	96

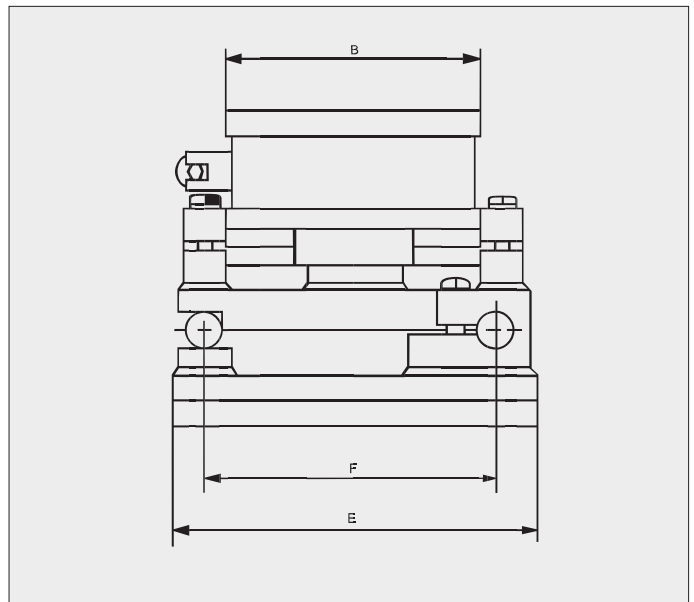
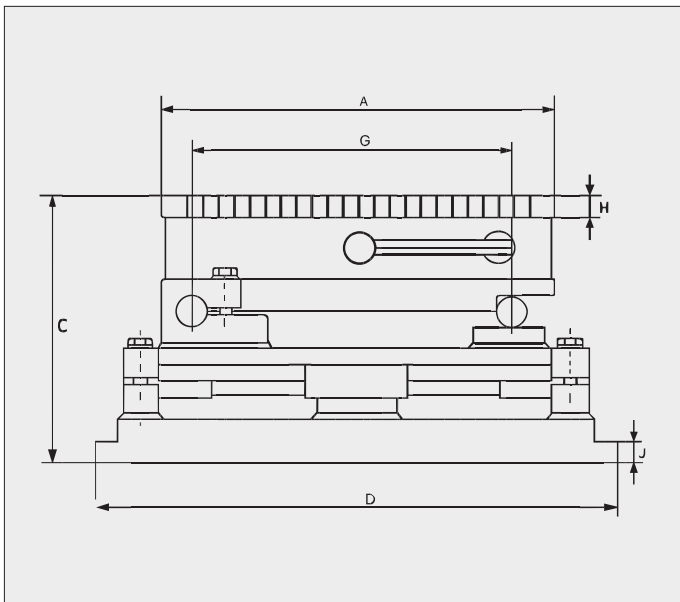
All measurements in mm. Other sizes and versions swivelling on the transverse axis on request.

BM64.100 Series Sine Tables

double pivoting over the longitudinal and transverse axes



The BM sine tables with a chuck can also be supplied in a double pivoting version. With these sine tables, pieces of work can be positioned at every imaginable angle both on the longitudinal and transverse axes. For multiple non-parallel surfaces, they offer optimal clamping possibilities. The technical data for the chucks is identical to that for the single swivel types.



normal pole Art.no.	fine pole Art.no.	A	B	C	D	E	F	G	H	J	weight (kg)	
											net	gross
BM 64.040	BM 64.140	150	100	162	238	122	70	100	23	15	16	19
BM 64.041	BM 64.141	255	130	170	345	152	100	200	23	15	41	45
BM 64.044	BM 64.144	300	150	181	395	165	100	200	23	15	45	50
BM 64.046	BM 64.146	400	150	189	492	165	100	300	23	15	58	65
BM 64.048	BM 64.148	400	200	215	520	220	150	300	23	15	80	90
BM 64.049	BM 64.149	500	200	215	620	220	150	400	23	15	100	110

All measurements in mm. Other sizes on request.